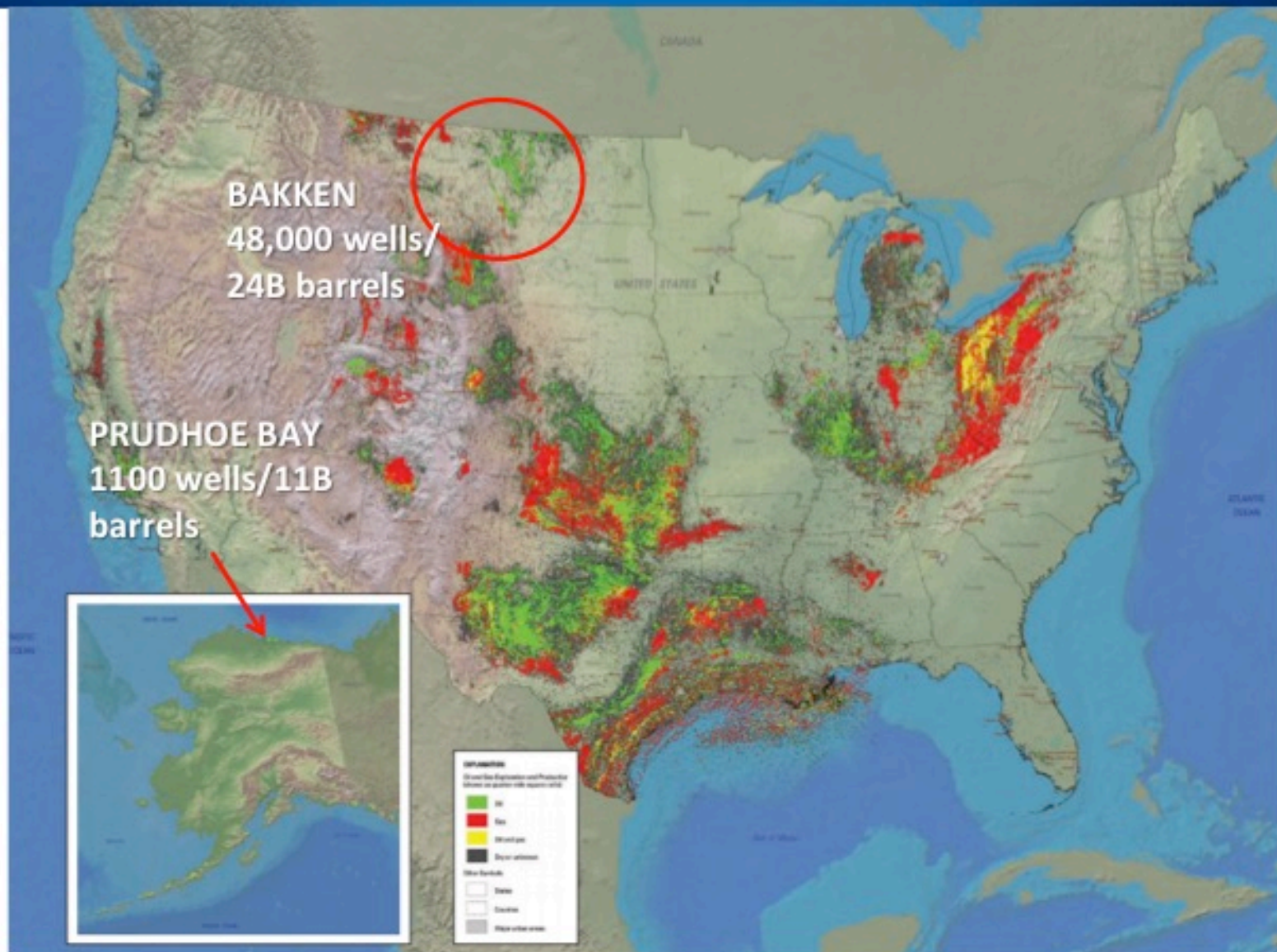


Unconventional Oil & Gas Development: Considerations for Local Governments



Julia Haggerty
Assistant Professor of Geography
Dept. of Earth Sciences
Montana State University
julia.haggerty@montana.edu
(406) 600-1766



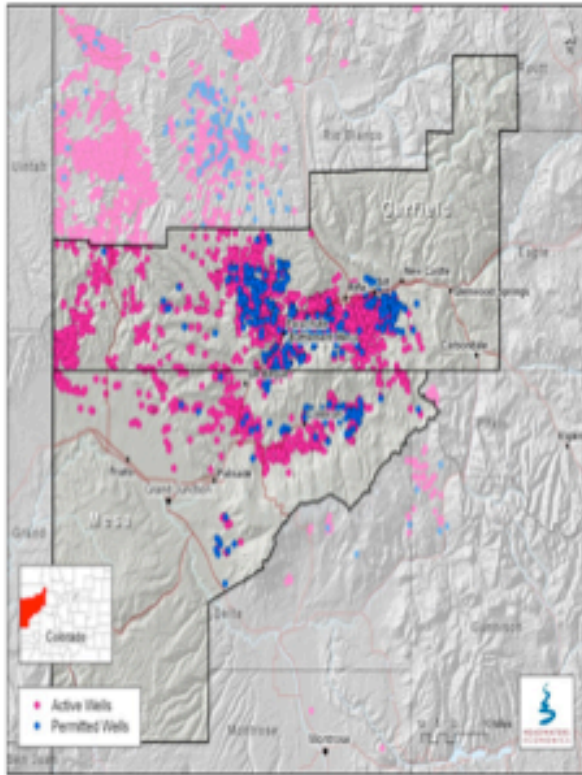
Resident vs. Nonresident Employment Associated with Marcellus Shale Development

Douglas H. Wrenn, Timothy W. Kelsey, and Edward C. Jaenicke

There is much debate about the employment effect of shale gas development, especially as it relates to extraction counties. Anecdotal evidence suggests that many of the jobs created are filled by nonresidents. We examine the impact shale gas development has on local employment in Pennsylvania using a data set that links workers to their personal residences. We find that activity in the Marcellus shale has had a modest positive impact on job growth. The impact is cut in half, however, when we use data for county residents only. Thus, traditional employment data may overestimate employment impacts from shale development.

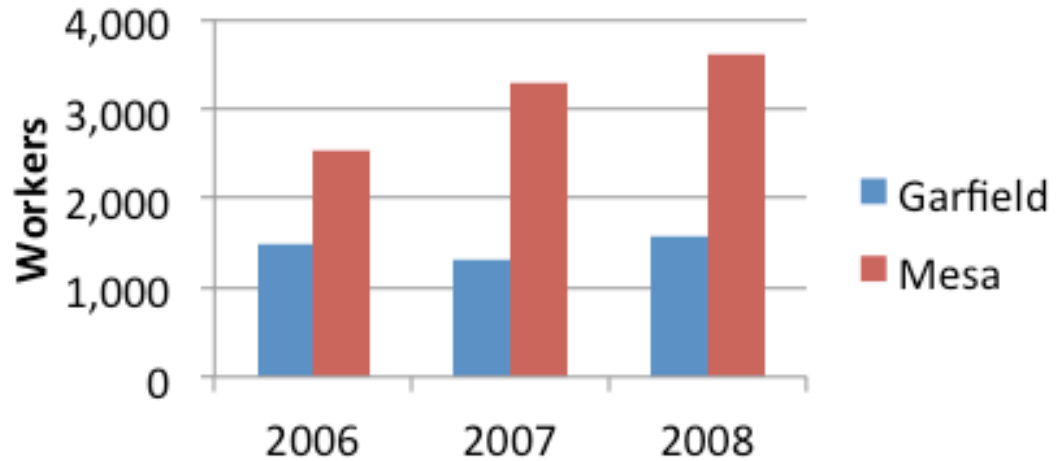
Key Words: employment, Marcellus shale, natural gas, natural resources

Agricultural and Resource Economics Review 44/2 (August 2015) 1-19
Copyright 2015 Northeastern Agricultural and Resource Economics Association

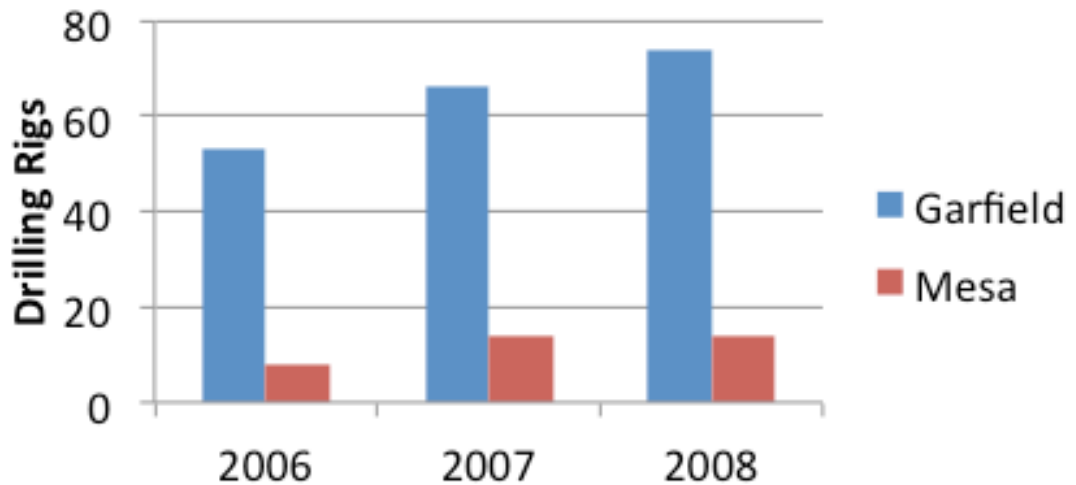


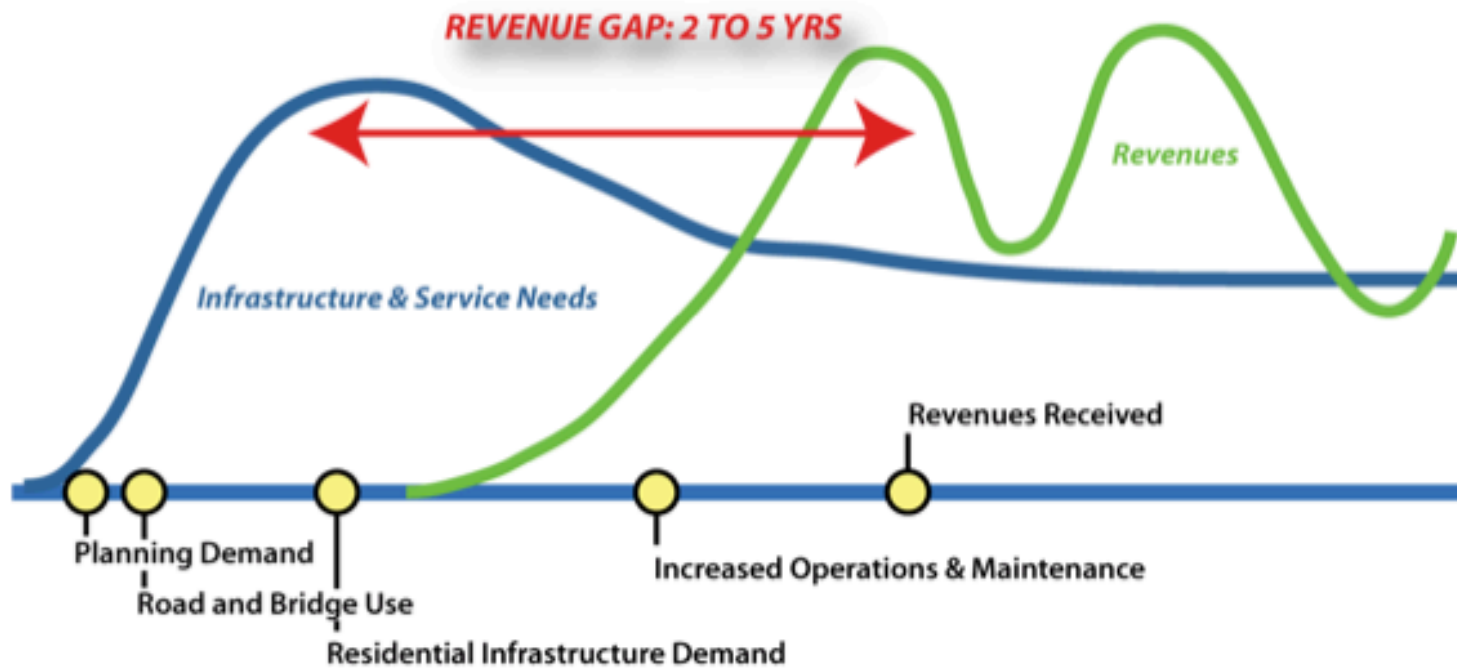
There are 8,723 active wells in Mesa and Garfield counties, and 2,578 permitted wells.
 Source: Colorado Oil and Gas Conservation Commission, 3/31/2011.

Oil and Gas Workers by Place of Residence



Drilling Activity by County





Adapted from BBC Research & Consulting, 2008

Recommended Resources:

"Preparing for the Boom", is a 20 minute film that compiles of personal interviews and graphics focused on the experiences of local communities and local governments with unconventional oil and gas development. Interviewees share their lessons about how to better prepare for energy development. The film features local officials and staff from a number of counties similar to Stillwater County.

<http://www.future-west.org/projects/communities-and-energy-development>

Montana Policy Review special issue, "Community Responses to Energy Development" (hard copies provided, also available by request from the Local Government Center: <http://www.msulocalgov.org/publications/index.html>)

Eastern Montana Impact Coalition Report. Eastern Montana Impact Coalition is a partnership of regional economic development corporations and a local development organization. The mission of EMIC is to measure the impacts of energy development in Eastern Montana, as well as assist communities in the four regions in making short and long term development plans that best capitalize on the growth that is occurring in their areas.

The EMIC received grant funding from the Economic Development Administration and Montana Department of Commerce Big Sky Trust Fund, to conduct a full Impact Study of the 16 county region that makes up the EMIC. Completed in spring of 2015, the study is available online:

<http://www.gndc.org/s/Abbreviated-EMIC-Regional-Impact-Analysis-2015.pdf>